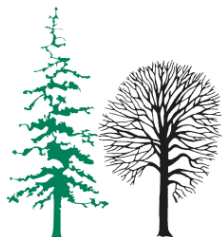


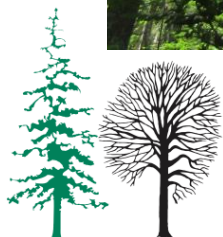
Napoved namnožitve jelovih podlubnikov v Sloveniji v 2018

Maarten de Groot in Nikica Ogris

9. seminar in delavnica iz varstva gozdov
12. 6. 2018, Lendava

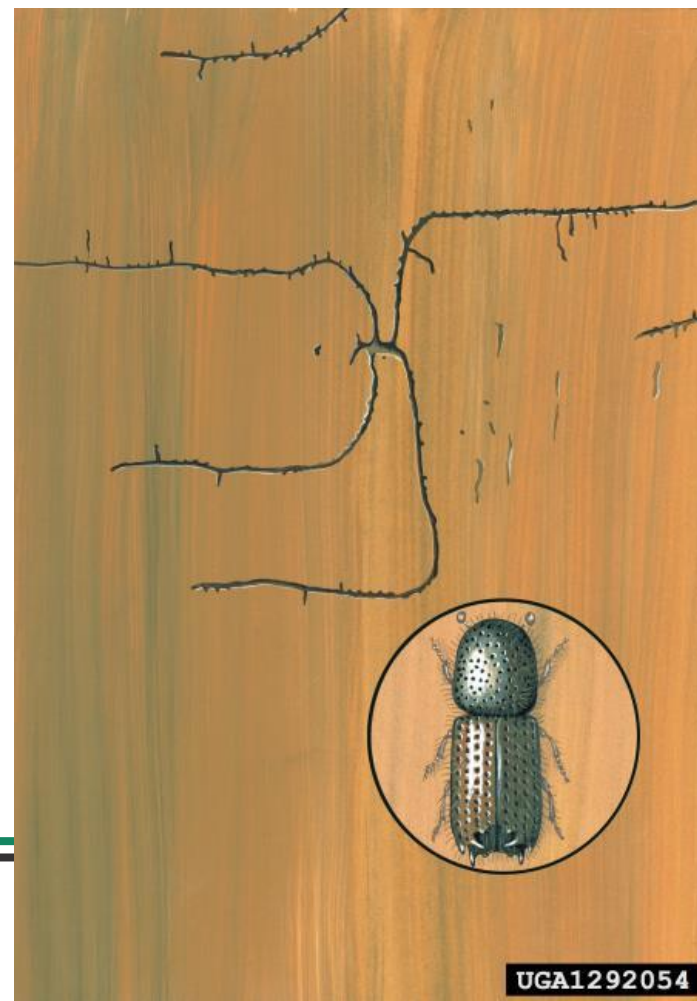
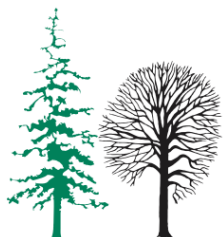


Problematika jelke in podlubnikov



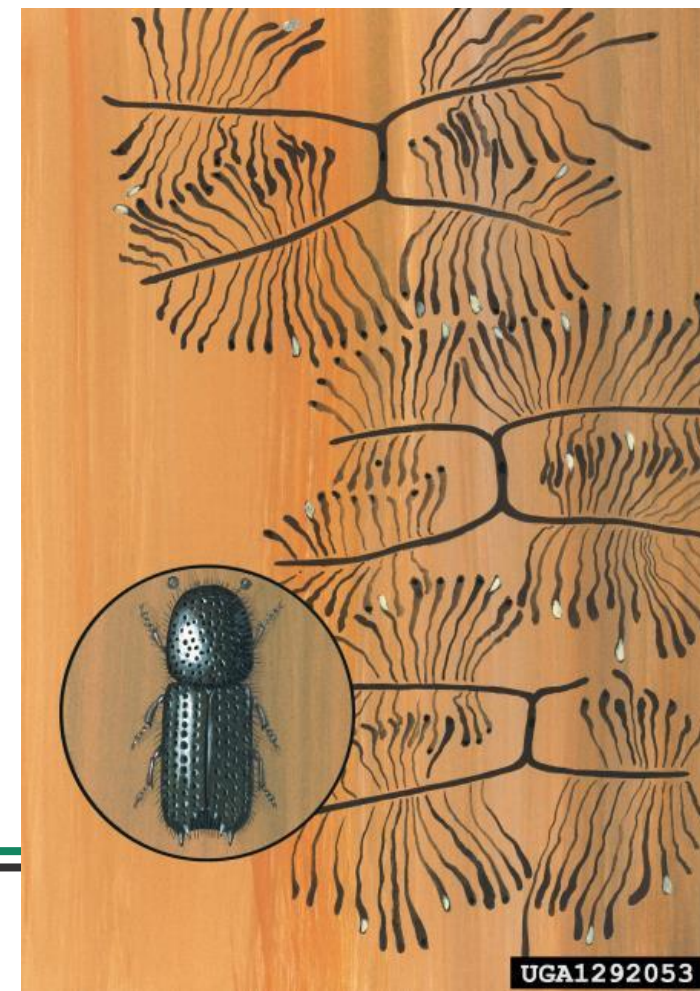
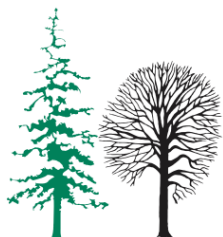
Jelovi podlubniki

- Ostrozobi jelov lubadar
(*Pityokteines spinidens*)
- Glavni gostitelj: jelka
- Razširjenost: celotna Evropa
- sekundarni in primarni škodljivec jelke



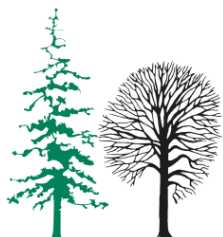
Jelovi podlubniki

- krivozobi jelov lubadar
(*Pityokteines curvidens*)
- Glavni gostitelj: jelka
- Razširjenost: celotna Evropa
- sekundarni in primarni škodljivec jelke



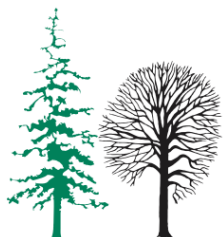
Cilj

- Kateri dejavniki vplivajo na sanitarne sečnje jelke zaradi podlubnikov?
- Napoved verjetnosti sanitarne sečnje jelke zaradi podlubnikov.

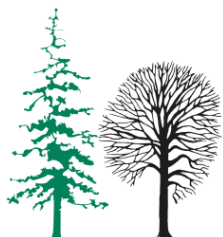
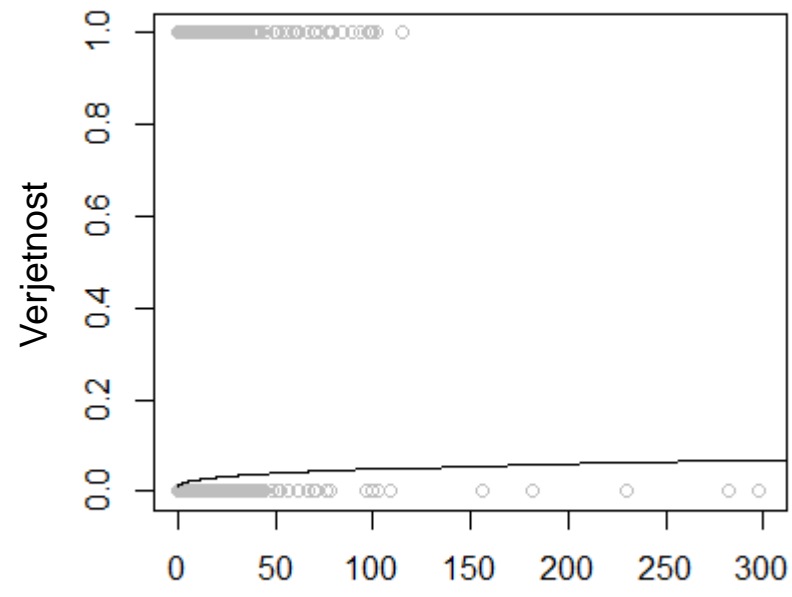
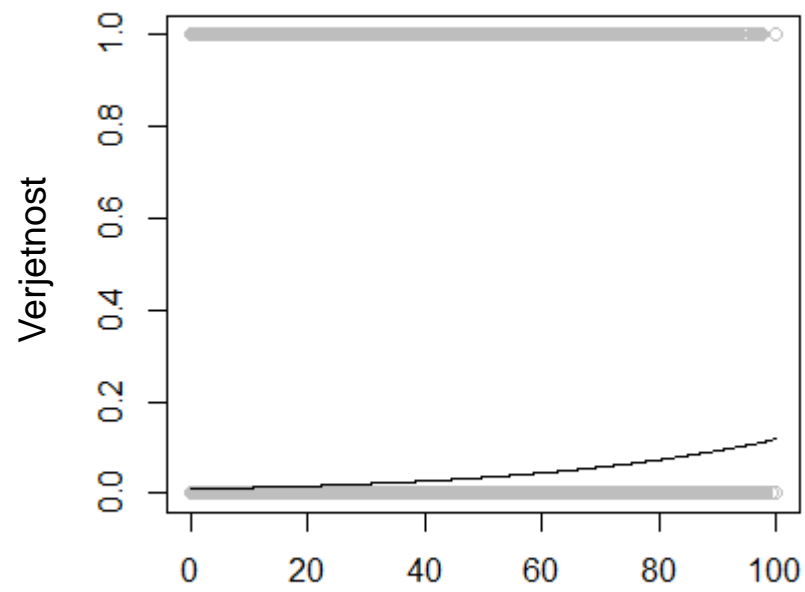
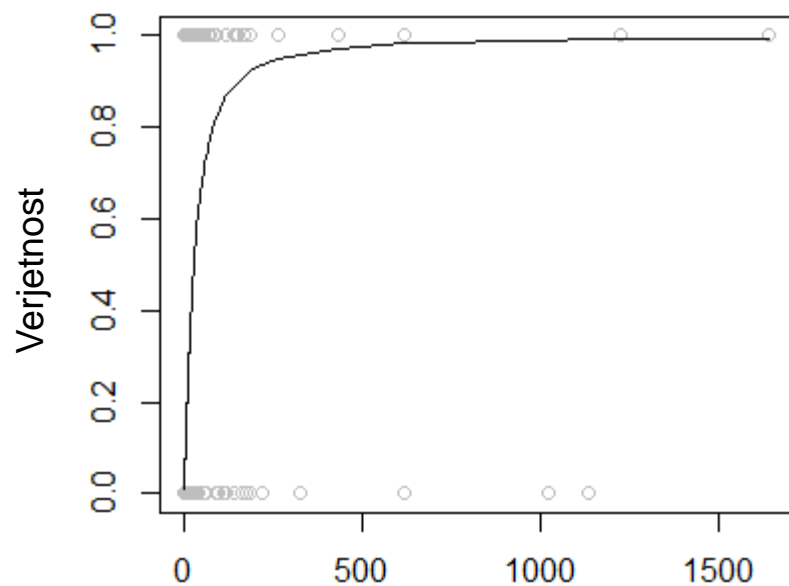


Model

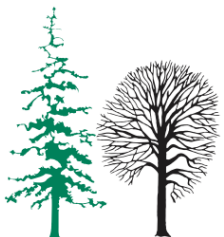
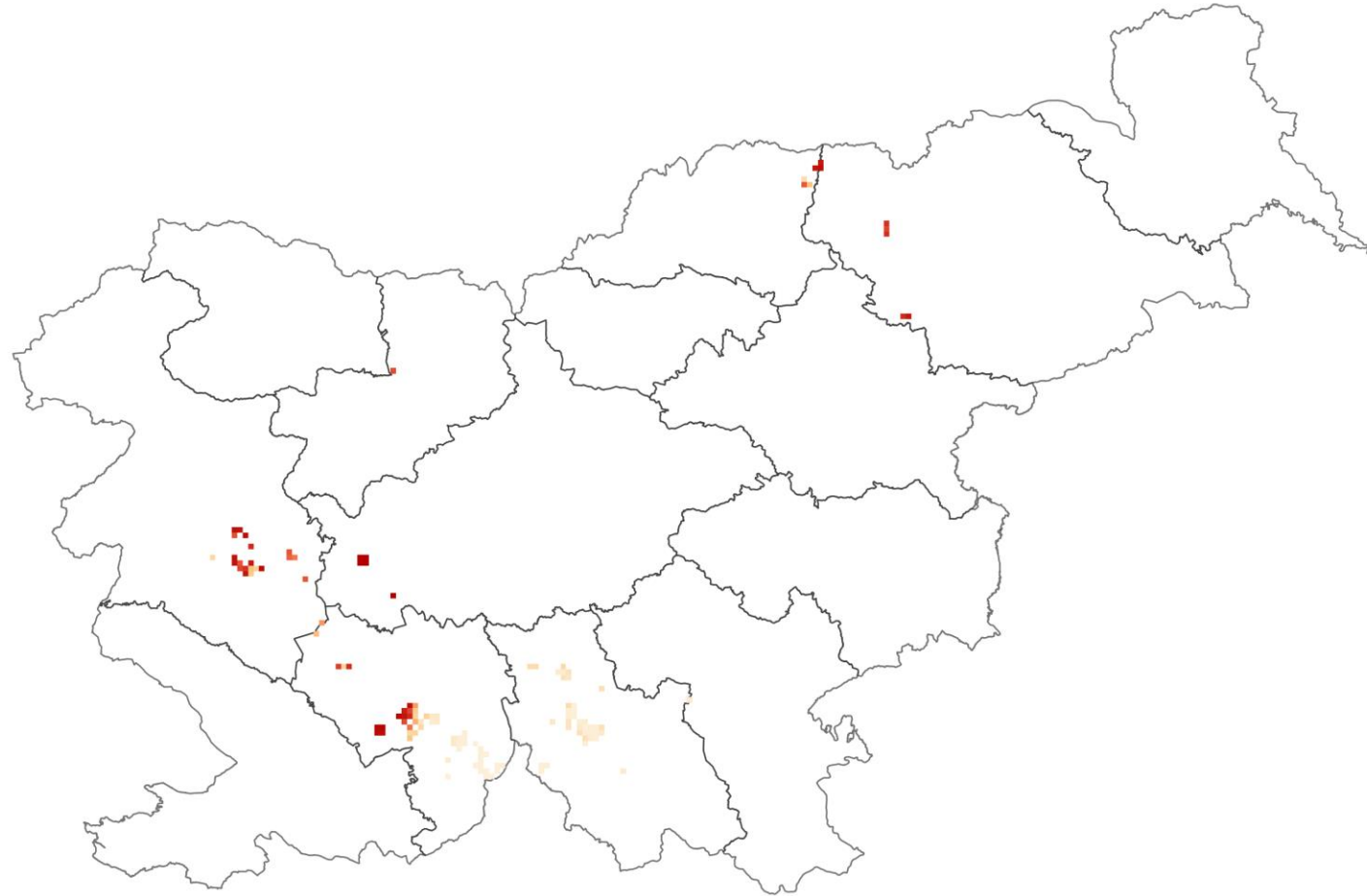
	z value	Pr(> z)	
(Intercept)	8.95	< 2e-16	***
jelka	55.68	< 2e-16	***
cbind(x, y)x	-13.26	< 2e-16	***
cbind(x, y)y	-19.68	< 2e-16	***
višine	-12.49	< 2e-16	***
ekspozicija	-7.77	7.80e-15	***
naklon	-7.20	5.90e-13	***
factor(host_geolog)1	-1.53	0.125236	
factor(host_geolog)2	6.41	1.49e-10	***
factor(host_geolog)3	3.39	0.000711	***
factor(host_geolog)4	3.13	0.001744	**
factor(host_geolog)5	4.81	1.49e-06	***
factor(host_geolog)6	4.25	2.10e-05	***
factor(host_geolog)7	5.40	6.84e-08	***
phosphorus	-5.43	5.48e-08	***
Globina tla	-12.60	< 2e-16	***
izmenjalna kapaciteta tal	-10.79	< 2e-16	***
stopnja nasičenosti z bazami	13.11	< 2e-16	***
SPI	-9.41	< 2e-16	***
temp	-15.67	< 2e-16	***
Napad Jel Lub -1 let	44.91	< 2e-16	***
osl drevesi -1 let	3.70	0.000214	***
san drevesi -1 let	14.50	< 2e-16	***



Rezultati

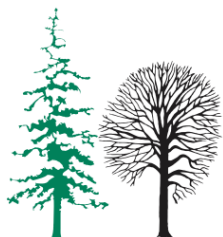


Napoved



Sklepi

- Najpomembnejši dejavniki:
 - Napad jelovih podlubnikov v prejšnjih letih, količina jelke, oslabljena drevesa zaradi abiotičnih poškodb
- Napoved
 - Problematična območja, Postojna, Tolmin in Maribor.



Zahvala

- ZGS
- CRP "Podlubniki 2016-2018"

