



**INŠTITUT ZA GOZDNO IN LESNO GOSPODARSTVO**

*61001 Ljubljana, Večna pot 2, p.p. 523-X, telefon: 268-963*

**POVRŠINE POŠKODOVANIH SESTOJEV ZARADI IMISIJ IN SUŠENJA JELKE**

Vid Mikulič, Tone Kralj

Ljubljana, 1990

GDK 615 : 425.1 : 446 : 177.7 Abies alba Jiff 1955-010:(497.12)

K.6. Vrsta lesa, gozdna površina, gozdna območje  
 vrsta lesa, vrsta, sušenje drevesa  
 Abies alba, jelovje

Inštitut za gozdno in  
 lesno gospodarstvo

Datum dela 06.12.90



Površine poškodovanih sestojev zaradi  
 IMISIJ IN SUŠENJA JELKE

GOZDNOGOSPODARSKO OBMOČJE		Površina ha	Obseg poškodb				mrtvi s.
			do 10%	11-30%	31-50%	nad 50%	
GGO TOLMIN	MLADOVJE	36.26	49.5	37.7	12.8	0.0	0.0
	DROGOVNJAK 1	325.53	53.2	46.8	0.0	0.0	0.0
	DROGOVNJAK 2	1,045.87	53.9	44.4	1.7	0.0	0.0
	DEBELJAK	3,501.70	65.0	27.0	7.8	0.0	0.2
	POMLAJENEC	1,380.62	49.0	50.1	0.9	0.0	0.0
	PREBIRALNI GOZD	149.02	38.8	61.2	0.0	0.0	0.0
	OPUŠČENI PANJEVEC	6.17	0.0	100.0	0.0	0.0	0.0
	GRMIŠČE	20.21	100.0	0.0	0.0	0.0	0.0
	SKUPAJ	6,465.38	58.5	36.6	4.8	0.0	0.1
GGO BLED	MLADOVJE	50.21	62.6	37.4	0.0	0.0	0.0
	DROGOVNJAK 1	28.73	100.0	0.0	0.0	0.0	0.0
	DROGOVNJAK 2	34.35	70.0	30.0	0.0	0.0	0.0
	DEBELJAK	153.59	62.3	37.7	0.0	0.0	0.0
	POMLAJENEC	17.23	69.0	29.1	1.9	0.0	0.0
	PREBIRALNI GOZD	996.73	54.8	33.9	11.3	0.0	0.0
	SKUPAJ	1,280.84	57.6	33.5	8.8	0.0	0.0
GGO KRANJ	MLADOVJE	15.66	94.8	5.2	0.0	0.0	0.0
	DROGOVNJAK 1	251.37	62.7	37.3	0.0	0.0	0.0
	DROGOVNJAK 2	681.35	72.1	18.7	6.4	2.8	0.0
	DEBELJAK	1,616.57	67.2	23.5	8.9	0.4	0.1
	POMLAJENEC	816.52	55.0	30.0	8.8	6.0	0.1
	OPUŠČENI PANJEVEC	17.46	100.0	0.0	0.0	0.0	0.0
	LISTNIK, STELJNIK	22.45	100.0	0.0	0.0	0.0	0.0
	GRMIŠČE	4.73	100.0	0.0	0.0	0.0	0.0
SKUPAJ	3,426.11	65.5	24.7	7.6	2.2	0.0	
GGO LJUBLJANA	MLADOVJE	341.87	78.5	14.7	6.8	0.0	0.0
	DROGOVNJAK 1	3,980.75	74.7	18.1	6.4	0.7	0.0
	DROGOVNJAK 2	8,590.37	74.9	22.4	2.5	0.2	0.0
	DEBELJAK	6,477.55	49.3	40.8	9.9	0.0	0.0
	POMLAJENEC	2,400.96	20.3	26.9	51.4	1.4	0.0
	PREBIRALNI GOZD	0.52	100.0	0.0	0.0	0.0	0.0
	GRMIŠČE	16.34	100.0	0.0	0.0	0.0	0.0
SKUPAJ	21,808.36	61.3	27.5	10.9	0.4	0.0	

Površine poškodovanih sestojev zaradi  
IMISIJ IN SUŠENJA JELKE

GOZDNOGOSPODARSKO OBMOČJE		Površina ha	do 10%	Obseg poškodb			mrtvi s.
				11-30%	31-50%	nad 50%	
GGO POSTOJNA	MLADOVJE	39.82	86.4	9.8	3.8	0.0	0.0
	DROGOVNJAK 2	1,016.81	68.9	29.9	1.2	0.0	0.0
	DEBELJAK	4,755.27	52.1	39.5	8.3	0.0	0.0
	POMLAJENEC	4,457.40	19.8	40.2	28.2	11.9	0.0
	PREBIRALNI GOZD	854.16	14.2	70.2	15.6	0.0	0.0
	SKUPAJ	11,123.46	37.9	41.2	16.2	4.8	0.0
GGO KOČEVJE	MLADOVJE	64.51	68.0	20.9	6.2	4.9	0.0
	DROGOVNJAK 1	56.96	72.8	27.2	0.0	0.0	0.0
	DROGOVNJAK 2	660.79	59.1	25.9	13.4	1.6	0.1
	DEBELJAK	1,358.16	70.6	16.6	10.3	2.4	0.0
	POMLAJENEC	153.12	29.3	18.3	45.9	6.5	0.0
	PREBIRALNI GOZD	552.36	62.6	33.0	4.4	0.0	0.0
	LISTNIK, STELJNIK	59.45	42.5	21.8	35.7	0.0	0.0
	GRMIŠČE	24.26	0.0	100.0	0.0	0.0	0.0
SKUPAJ	2,929.61	63.2	23.0	11.9	1.9	0.0	
GGO NOVO MESTO	DROGOVNJAK 1	0.33	100.0	0.0	0.0	0.0	0.0
	DROGOVNJAK 2	97.87	60.4	30.4	7.3	1.8	0.0
	DEBELJAK	843.88	46.1	42.2	7.7	4.0	0.0
	POMLAJENEC	340.28	21.4	78.6	0.0	0.0	0.0
	PREBIRALNI GOZD	110.12	59.0	41.0	0.0	0.0	0.0
	LISTNIK, STELJNIK	21.37	100.0	0.0	0.0	0.0	0.0
	GRMIŠČE	296.77	100.0	0.0	0.0	0.0	0.0
SKUPAJ	1,710.62	52.9	40.8	4.2	2.1	0.0	
GGO BREŽICE	DROGOVNJAK 2	7.06	100.0	0.0	0.0	0.0	0.0
	DEBELJAK	27.26	100.0	0.0	0.0	0.0	0.0
	SKUPAJ	34.32	100.0	0.0	0.0	0.0	0.0
GGO CELJE	MLADOVJE	52.19	37.0	31.5	13.8	17.8	0.0
	DROGOVNJAK 2	945.89	42.9	28.3	17.1	11.0	0.6
	DEBELJAK	1,768.84	50.1	25.5	13.1	10.3	0.9
	POMLAJENEC	165.91	28.6	13.8	32.4	20.6	4.7
	OPUŠČENI PANJEVEC	26.50	40.5	59.5	0.0	0.0	0.0
	LISTNIK, STELJNIK	8.19	0.0	100.0	0.0	0.0	0.0
SKUPAJ	2,967.52	46.2	26.3	15.3	11.1	1.0	

Površine poškodovanih sestojev zaradi  
IMISIJ IN SUŠENJA JELKE

GOZDNOGOSPODARSKO OBMOČJE		Površina ha	do 10%	Obseg poškodb			mrtvi s.
				11-30%	31-50%	nad 50%	
GGO NAZARJE	MLADOVJE	14.02	100.0	0.0	0.0	0.0	0.0
	DROGOVNJAK 1	149.19	94.4	5.6	0.0	0.0	0.0
	DROGOVNJAK 2	1,879.45	72.6	23.1	4.2	0.0	0.0
	DEBELJAK	2,335.09	63.5	24.6	11.8	0.2	0.0
	POMLAJENEC	684.36	76.3	18.6	4.8	0.3	0.0
	SKUPAJ	5,062.11	69.6	22.6	7.6	0.1	0.0
GGO SLOVENJ GRADEC	MLADOVJE	931.15	64.1	19.0	11.3	1.6	4.0
	DROGOVNJAK 1	1,276.22	62.2	23.5	7.1	2.0	5.2
	DROGOVNJAK 2	4,055.04	58.5	26.8	8.7	3.1	2.8
	DEBELJAK	7,508.22	48.2	30.3	13.8	6.6	1.0
	POMLAJENEC	1,373.90	30.0	32.9	23.5	8.0	5.5
	SKUPAJ	15,144.53	51.5	28.4	12.6	5.1	2.5
GGO MARIBOR	MLADOVJE	79.30	47.8	25.0	12.3	0.0	14.8
	DROGOVNJAK 1	3,158.36	61.2	22.8	13.8	2.2	0.0
	DROGOVNJAK 2	2,550.66	44.3	41.5	13.3	0.8	0.1
	DEBELJAK	6,803.64	40.3	30.6	24.8	4.3	0.0
	POMLAJENEC	1,465.30	45.1	26.3	25.9	2.6	0.0
	LISTNIK, STELJNIK	56.89	18.7	81.3	0.0	0.0	0.0
	SKUPAJ	14,114.15	46.2	30.5	20.2	3.0	0.1
GGO MURSKA SOBOTA	MLADOVJE	20.43	37.0	63.0	0.0	0.0	0.0
	DROGOVNJAK 1	119.56	66.1	21.9	12.0	0.0	0.0
	DROGOVNJAK 2	253.98	72.9	3.5	23.6	0.0	0.0
	DEBELJAK	106.25	90.9	9.1	0.0	0.0	0.0
	POMLAJENEC	59.88	74.2	10.3	15.6	0.0	0.0
	SKUPAJ	560.10	73.7	11.4	14.9	0.0	0.0
KRAŠKO OBMOČJE	MLADOVJE	15.01	100.0	0.0	0.0	0.0	0.0
	DROGOVNJAK 1	74.74	100.0	0.0	0.0	0.0	0.0
	DROGOVNJAK 2	10.23	94.8	5.2	0.0	0.0	0.0
	DEBELJAK	5.78	0.0	100.0	0.0	0.0	0.0
	OPUŠČENI PANJEVEC	228.94	10.0	90.0	0.0	0.0	0.0
	SKUPAJ	334.70	36.5	63.5	0.0	0.0	0.0

Površine poškodovanih sestojev zaradi  
IMISIJ IN SUŠENJA JELKE

GOZDNOGOSPODARSKO OBMOČJE	Površina ha	Obseg poškodb				
		do 10%	11-30%	31-50%	nad 50%	mrtvi s.
<b>S K U P A J</b>						
MLADOVJE	1,660.43	66.3	19.7	9.4	1.6	2.9
DROGOVNJAK 1	9,421.74	67.9	21.6	8.5	1.3	0.7
DROGOVNJAK 2	21,829.72	64.8	27.0	6.3	1.4	0.6
DEBELJAK	37,261.80	51.9	31.9	13.1	2.8	0.3
POMLAJENEC	13,315.48	32.4	35.1	25.9	6.1	0.6
PREBIRALNI GOZD	2,662.91	42.7	47.2	10.1	0.0	0.0
OPUŠČENI PANJEVEC	279.07	18.3	81.7	0.0	0.0	0.0
LISTNIK, STELJNIK	168.35	47.4	40.0	12.6	0.0	0.0
GRMIŠČE	362.31	93.3	6.7	0.0	0.0	0.0
<b>SKUPAJ</b>	<b>86,961.81</b>	<b>53.9</b>	<b>30.3</b>	<b>12.6</b>	<b>2.7</b>	<b>0.5</b>

Površine poškodovanih sestojev zaradi  
IMISIJ IN SUŠENJA JELKE

ASOCIACIJA	Površina ha	Obseg poškodb					mrtvi s.
		do 10%	11-30%	31-50%	nad 50%		
-----							
QUERCO ROBORI - CARPINETUM							
DROGOVNJAK 1	45.68	100.0	0.0	0.0	0.0	0.0	
DROGOVNJAK 2	78.16	84.2	15.8	0.0	0.0	0.0	
DEBELJAK	71.54	63.2	36.8	0.0	0.0	0.0	
POMLAJENEC	18.57	8.6	41.2	50.2	0.0	0.0	
LISTNIK,STELJNIK	17.47	43.5	56.5	0.0	0.0	0.0	
GRMIŠČE	13.34	100.0	0.0	0.0	0.0	0.0	
-----							
SKUPAJ	244.76	73.2	23.0	3.8	0.0	0.0	
CARICI BRIZOIDI -ALNETUM GLUT.							
MLADOVJE	20.43	37.0	63.0	0.0	0.0	0.0	
DROGOVNJAK 1	52.50	90.2	9.8	0.0	0.0	0.0	
DROGOVNJAK 2	199.64	68.1	2.0	30.0	0.0	0.0	
DEBELJAK	64.49	100.0	0.0	0.0	0.0	0.0	
POMLAJENEC	42.81	100.0	0.0	0.0	0.0	0.0	
-----							
SKUPAJ	379.87	78.5	5.8	15.8	0.0	0.0	
ALNETUM GLUTINOSO-INCANAE							
DROGOVNJAK 2	10.04	15.5	84.5	0.0	0.0	0.0	
DEBELJAK	2.09	0.0	100.0	0.0	0.0	0.0	
-----							
SKUPAJ	12.13	12.9	87.1	0.0	0.0	0.0	
QUERCO - CARPINETUM V.HACQ.							
MLADOVJE	8.49	100.0	0.0	0.0	0.0	0.0	
DROGOVNJAK 1	59.24	94.7	0.0	5.3	0.0	0.0	
DROGOVNJAK 2	75.56	43.1	56.5	0.0	0.0	0.5	
DEBELJAK	65.78	41.9	55.5	2.5	0.0	0.0	
PREBIRALNI GOZD	0.20	100.0	0.0	0.0	0.0	0.0	
-----							
SKUPAJ	209.27	59.7	37.8	2.3	0.0	0.2	
QUERCO - CARPINETUM V.LUZULA							
MLADOVJE	6.97	58.2	27.7	14.1	0.0	0.0	
DROGOVNJAK 1	122.68	57.6	30.7	11.7	0.0	0.0	
DROGOVNJAK 2	92.95	60.4	9.5	30.1	0.0	0.0	
DEBELJAK	132.94	32.7	35.1	30.6	1.6	0.0	
POMLAJENEC	11.53	12.7	34.9	52.5	0.0	0.0	
-----							
SKUPAJ	367.07	47.9	27.0	24.5	0.6	0.0	

Površine poškodovanih sestojev zaradi  
IMISIJ IN SUŠENJA JELKE

ASOCIACIJA	Površina ha	Obseg poškodb					mrtvi s.
		do 10%	11-30%	31-50%	nad 50%		
-----							
ORNITHOGALO PYRENAICI-CARPINETUM							
DROGOVNJAK 1	3.37	0.0	100.0	0.0	0.0	0.0	
DEBELJAK	6.15	0.0	100.0	0.0	0.0	0.0	
SKUPAJ	9.52	0.0	100.0	0.0	0.0	0.0	
-----							
LATYRO - QUERCETUM							
DROGOVNJAK 1	5.85	0.0	100.0	0.0	0.0	0.0	
DROGOVNJAK 2	1.68	0.0	29.2	34.5	36.3	0.0	
DEBELJAK	34.42	75.0	8.7	10.4	5.8	0.0	
SKUPAJ	41.95	61.5	22.3	9.9	6.2	0.0	
-----							
MELAMPYRO VULGATI - QUERCETUM							
DROGOVNJAK 1	15.52	100.0	0.0	0.0	0.0	0.0	
DROGOVNJAK 2	9.70	100.0	0.0	0.0	0.0	0.0	
OPUŠČENI PANJEVEC	228.94	10.0	90.0	0.0	0.0	0.0	
SKUPAJ	254.16	18.9	81.1	0.0	0.0	0.0	
-----							
SESLERIO - FAGETUM							
MLADOVJE	3.81	0.0	59.8	40.2	0.0	0.0	
DROGOVNJAK 1	9.59	100.0	0.0	0.0	0.0	0.0	
DROGOVNJAK 2	8.61	100.0	0.0	0.0	0.0	0.0	
DEBELJAK	65.57	77.3	22.7	0.0	0.0	0.0	
POMLAJENEC	7.00	5.1	94.9	0.0	0.0	0.0	
SKUPAJ	94.58	73.2	25.1	1.6	0.0	0.0	
-----							
HACQUETIO - FAGETUM							
MLADOVJE	84.31	83.9	9.2	5.9	1.0	0.0	
DROGOVNJAK 1	817.60	81.0	12.4	4.9	1.7	0.0	
DROGOVNJAK 2	2,189.75	84.2	14.1	1.3	0.4	0.0	
DEBELJAK	928.51	68.3	16.8	14.3	0.6	0.0	
POMLAJENEC	113.84	67.2	27.8	4.7	0.3	0.0	
PREBIRALNI GOZD	4.36	100.0	0.0	0.0	0.0	0.0	
LISTNIK, STELJNIK	15.16	100.0	0.0	0.0	0.0	0.0	
SKUPAJ	4,153.53	79.6	14.6	5.1	0.7	0.0	
-----							
FAGETUM SUBMONTANUM SUBMEDITERRANEUM							
DEBELJAK	11.69	74.3	25.7	0.0	0.0	0.0	
SKUPAJ	11.69	74.3	25.7	0.0	0.0	0.0	

Površine poškodovanih sestojev zaradi

IMISIJ IN SUŠENJA JELKE

ASOCIACIJA	Površina ha	Obseg poškodb					mrtvi s.
		do 10%	11-30%	31-50%	nad 50%		
FAGETUM SUBMONTANUM PRAEALPINUM							
MLADOVJE	4.59	100.0	0.0	0.0	0.0	0.0	
DROGOVNJAK 1	17.36	100.0	0.0	0.0	0.0	0.0	
DROGOVNJAK 2	312.65	76.8	22.8	0.1	0.3	0.0	
DEBELJAK	400.93	65.2	28.7	5.3	0.8	0.0	
POMLAJENEC	88.58	42.2	26.7	10.1	21.0	0.0	
GRMIŠČE	20.21	100.0	0.0	0.0	0.0	0.0	
SKUPAJ	844.32	68.8	24.9	3.6	2.7	0.0	
ENNEAPHYLLO - FAGETUM							
MLADOVJE	56.48	90.0	4.4	0.0	5.6	0.0	
DROGOVNJAK 1	274.90	72.5	8.3	19.2	0.0	0.0	
DROGOVNJAK 2	711.89	59.0	18.3	22.7	0.0	0.0	
DEBELJAK	1,190.04	30.9	30.7	29.1	9.3	0.0	
POMLAJENEC	277.95	30.2	39.4	25.8	4.6	0.0	
PREBIRALNI GOZD	4.88	0.0	100.0	0.0	0.0	0.0	
SKUPAJ	2,516.14	44.6	25.2	25.1	5.0	0.0	
ORVALO - FAGETUM							
DROGOVNJAK 2	60.73	100.0	0.0	0.0	0.0	0.0	
DEBELJAK	14.33	100.0	0.0	0.0	0.0	0.0	
POMLAJENEC	4.93	48.5	0.0	51.5	0.0	0.0	
OPUŠČENI PANJEVEC	6.17	0.0	100.0	0.0	0.0	0.0	
SKUPAJ	86.16	89.9	7.2	2.9	0.0	0.0	
ANEMONE - FAGETUM							
MLADOVJE	43.39	48.0	40.9	11.1	0.0	0.0	
DROGOVNJAK 1	42.96	65.2	25.3	9.5	0.0	0.0	
DROGOVNJAK 2	105.53	73.0	22.3	0.0	4.7	0.0	
DEBELJAK	689.77	86.0	14.0	0.0	0.0	0.0	
POMLAJENEC	282.29	68.1	6.9	25.0	0.0	0.0	
PREBIRALNI GOZD	514.65	79.9	20.1	0.0	0.0	0.0	
SKUPAJ	1,678.59	78.8	16.2	4.7	0.3	0.0	
LAMIO ORVALAE-FAGETUM PRAEALPINUM							
MLADOVJE	12.39	0.0	100.0	0.0	0.0	0.0	
DROGOVNJAK 2	88.11	7.1	53.8	23.0	16.0	0.0	
DEBELJAK	94.83	33.9	2.4	36.6	27.0	0.0	
POMLAJENEC	10.85	100.0	0.0	0.0	0.0	0.0	
SKUPAJ	206.18	23.9	30.1	26.7	19.3	0.0	



Površine poškodovanih sestojev zaradi  
IMISIJ IN SUŠENJA JELKE

ASOCIACIJA	Površina ha	Obseg poškodb					mrtvi s.
		do 10%	11-30%	31-50%	nad 50%		
SAVENSI - FAGETUM							
MLADOVJE	132.00	77.3	18.2	4.5	0.0	0.0	
DROGOVNJAK 1	756.35	36.7	33.9	29.4	0.0	0.0	
DROGOVNJAK 2	913.79	62.6	32.5	4.8	0.0	0.0	
DEBELJAK	1,700.64	51.0	31.9	17.0	0.0	0.1	
POMLAJENEC	201.61	67.9	21.3	10.7	0.0	0.0	
SKUPAJ	3,704.39	52.8	31.4	15.8	0.0	0.0	
ADENOSTYLO - FAGETUM							
MLADOVJE	12.84	0.0	50.5	47.4	2.1	0.0	
DROGOVNJAK 1	31.68	39.8	41.8	7.1	11.3	0.0	
DROGOVNJAK 2	235.94	85.9	6.0	7.8	0.3	0.0	
DEBELJAK	155.26	85.6	13.9	0.0	0.5	0.0	
POMLAJENEC	127.81	15.0	3.0	11.7	10.7	59.6	
SKUPAJ	563.53	65.2	10.5	7.4	3.4	13.5	
FAGETUM SUBALPINUM							
DEBELJAK	13.10	100.0	0.0	0.0	0.0	0.0	
SKUPAJ	13.10	100.0	0.0	0.0	0.0	0.0	
OSTRYO - FAGETUM							
MLADOVJE	1.77	0.0	0.0	100.0	0.0	0.0	
DROGOVNJAK 1	28.63	83.3	16.7	0.0	0.0	0.0	
DROGOVNJAK 2	317.30	85.6	9.3	5.0	0.0	0.0	
DEBELJAK	189.19	70.8	26.6	0.0	2.6	0.0	
POMLAJENEC	46.44	74.2	25.8	0.0	0.0	0.0	
SKUPAJ	583.33	79.5	16.6	3.0	0.9	0.0	
CARICI ALBAE - FAGETUM							
MLADOVJE	68.14	54.1	19.7	23.1	2.9	0.1	
DROGOVNJAK 1	388.50	64.4	11.4	21.4	2.5	0.3	
DROGOVNJAK 2	594.63	82.7	12.0	2.1	3.2	0.0	
DEBELJAK	485.61	37.2	16.0	32.3	14.5	0.0	
POMLAJENEC	36.98	34.3	61.9	3.3	0.6	0.0	
PREBIRALNI GOZD	49.44	0.0	0.0	100.0	0.0	0.0	
SKUPAJ	1,623.30	59.9	14.1	19.6	6.2	0.1	

Površine poškodovanih sestojev zaradi

IMISIJ IN SUŠENJA JELKE

ASOCIACIJA	Površina ha	Obseg poškodb					mrtvi s.
		do 10%	11-30%	31-50%	nad 50%		
CALAMAGROSTIDO VARIAE - FAGETUM							
DROGOVNJAK 1	20.41	100.0	0.0	0.0	0.0	0.0	
DROGOVNJAK 2	20.87	52.1	47.9	0.0	0.0	0.0	
SKUPAJ	41.28	75.8	24.2	0.0	0.0	0.0	
ARUNCO - FAGETUM							
MLADOVJE	141.63	59.4	14.7	9.9	0.0	16.0	
DROGOVNJAK 1	407.85	54.7	20.7	20.0	4.5	0.2	
DROGOVNJAK 2	735.76	59.2	30.3	10.2	0.2	0.1	
DEBELJAK	1,075.99	48.6	26.2	18.3	6.5	0.4	
POMLAJENEC	116.96	18.7	39.4	15.5	26.4	0.0	
GRMIŠČE	3.00	100.0	0.0	0.0	0.0	0.0	
SKUPAJ	2,481.19	52.0	26.4	15.5	4.9	1.2	
ISOPRYO - FAGETUM							
MLADOVJE	4.73	100.0	0.0	0.0	0.0	0.0	
DROGOVNJAK 1	52.04	100.0	0.0	0.0	0.0	0.0	
DROGOVNJAK 2	126.76	100.0	0.0	0.0	0.0	0.0	
DEBELJAK	10.34	100.0	0.0	0.0	0.0	0.0	
SKUPAJ	193.87	100.0	0.0	0.0	0.0	0.0	
ACERI - FAGETUM							
DEBELJAK	20.76	100.0	0.0	0.0	0.0	0.0	
SKUPAJ	20.76	100.0	0.0	0.0	0.0	0.0	
QUERCO - FAGETUM							
MLADOVJE	25.91	58.9	41.1	0.0	0.0	0.0	
DROGOVNJAK 1	195.93	41.8	58.2	0.0	0.0	0.0	
DROGOVNJAK 2	130.04	89.6	10.4	0.0	0.0	0.0	
DEBELJAK	309.49	71.6	18.1	2.9	7.4	0.0	
POMLAJENEC	23.85	91.6	8.4	0.0	0.0	0.0	
LISTNIK,STELJNIK	21.37	100.0	0.0	0.0	0.0	0.0	
GRMIŠČE	321.03	92.4	7.6	0.0	0.0	0.0	
SKUPAJ	1,027.62	75.4	21.5	0.9	2.2	0.0	

Površine poškodovanih sestojev zaradi  
IMISIJ IN SUŠENJA JELKE

ASOCIACIJA	Površina ha	Obseg poškodb					mrtvi s.
		do 10%	11-30%	31-50%	nad 50%		
-----							
QUERCO - FAGETUM VAR. LUZULA							
DROGOVNJAK 1	138.54	100.0	0.0	0.0	0.0	0.0	
DROGOVNJAK 2	40.40	100.0	0.0	0.0	0.0	0.0	
DEBELJAK	12.11	47.4	52.6	0.0	0.0	0.0	
-----							
SKUPAJ	191.05	96.7	3.3	0.0	0.0	0.0	
LUZULO - FAGETUM							
MLADOVJE	228.56	80.4	10.5	5.4	3.1	0.5	
DROGOVNJAK 1	642.46	63.3	27.8	7.9	0.9	0.0	
DROGOVNJAK 2	1,598.06	57.7	28.6	4.0	7.4	2.2	
DEBELJAK	2,216.63	59.1	27.5	8.2	4.4	0.7	
POMLAJENEC	394.00	50.9	26.8	19.9	0.7	1.7	
PREBIRALNI GOZD	52.72	0.0	30.3	69.7	0.0	0.0	
OPUŠČENI PANJEVEC	29.72	46.9	53.1	0.0	0.0	0.0	
LISTNIK, STELJNIK	47.61	6.4	93.6	0.0	0.0	0.0	
GRMIŠČE	4.73	100.0	0.0	0.0	0.0	0.0	
-----							
SKUPAJ	5,214.49	58.4	27.8	8.2	4.5	1.1	
FESTUCO DRYMEIAE - FAGETUM							
DROGOVNJAK 2	2.63	0.0	100.0	0.0	0.0	0.0	
DEBELJAK	4.88	51.8	0.0	0.0	48.2	0.0	
-----							
SKUPAJ	7.51	33.7	35.0	0.0	31.3	0.0	
POLYGONATUM VERTICILLATI-LUZULO-FAGETUM							
MLADOVJE	11.25	100.0	0.0	0.0	0.0	0.0	
DROGOVNJAK 1	72.48	92.7	7.3	0.0	0.0	0.0	
DROGOVNJAK 2	1,271.38	67.6	26.7	5.7	0.0	0.0	
DEBELJAK	1,753.16	58.7	26.4	14.8	0.0	0.0	
POMLAJENEC	429.88	72.7	21.4	5.9	0.0	0.0	
-----							
SKUPAJ	3,538.15	64.4	25.4	10.1	0.0	0.0	
QUERCO-LUZULO-FAGETUM							
DROGOVNJAK 2	10.89	2.2	1.6	55.6	22.1	18.5	
DEBELJAK	135.92	83.0	0.0	0.0	16.2	0.8	
POMLAJENEC	0.99	100.0	0.0	0.0	0.0	0.0	
-----							
SKUPAJ	147.80	77.1	0.1	4.1	16.5	2.1	

Površine poškodovanih sestojev zaradi

IMISIJ IN SUŠENJA JELKE

ASOCIACIJA		Površina ha	do 10%	11-30%	Obseg poškodb		mrtvi s.
					31-50%	nad 50%	
BLECHNO - FAGETUM	MLADOVJE	85.63	60.6	31.4	4.9	1.4	1.6
	DROGOVNJAK 1	1,193.01	86.3	10.7	1.6	0.1	1.3
	DROGOVNJAK 2	3,019.14	79.9	14.1	4.2	1.0	0.7
	DEBELJAK	2,210.43	53.3	23.8	13.6	8.0	1.2
	POMLAJENEC	443.52	52.2	37.5	7.3	3.1	0.0
	OPUŠČENI PANJEVEC	14.24	100.0	0.0	0.0	0.0	0.0
	LISTNIK,STELJNIK	22.45	100.0	0.0	0.0	0.0	0.0
	SKUPAJ	6,988.42	70.7	18.2	6.9	3.2	0.9
DESCHAMPSIO - FAGETUM	DROGOVNJAK 1	7.82	0.0	100.0	0.0	0.0	0.0
	DEBELJAK	0.50	0.0	100.0	0.0	0.0	0.0
	SKUPAJ	8.32	0.0	100.0	0.0	0.0	0.0
ABIETI - FAGETUM DINARICUM							
	MLADOVJE	199.26	79.0	21.0	0.0	0.0	0.0
	DROGOVNJAK 1	1,414.15	54.7	44.4	0.9	0.0	0.0
	DROGOVNJAK 2	4,314.20	48.3	45.1	6.3	0.3	0.0
	DEBELJAK	12,107.34	52.3	40.3	7.0	0.4	0.1
	POMLAJENEC	7,015.79	24.7	42.9	29.2	3.2	0.0
	PREBIRALNI GOZD	1,536.91	34.2	55.6	10.2	0.0	0.0
	LISTNIK,STELJNIK	44.29	22.8	29.3	47.9	0.0	0.0
	SKUPAJ	26,631.94	43.6	42.7	12.6	1.1	0.0
ABIETI - FAGETUM PREALP. DIN.							
	MLADOVJE	150.50	68.7	28.2	3.1	0.0	0.0
	DROGOVNJAK 1	277.20	86.0	11.7	0.3	0.0	1.9
	DROGOVNJAK 2	747.36	73.5	19.7	3.4	2.2	1.2
	DEBELJAK	2,894.54	56.9	29.1	13.2	0.3	0.6
	POMLAJENEC	733.52	46.3	39.5	7.4	6.7	0.1
	PREBIRALNI GOZD	371.63	35.8	57.1	7.1	0.0	0.0
	SKUPAJ	5,174.75	58.2	30.2	9.5	1.4	0.6
ABIETI-FAGETUM PRAEALPINUM							
	DROGOVNJAK 1	5.26	100.0	0.0	0.0	0.0	0.0
	DROGOVNJAK 2	100.35	15.1	67.3	17.7	0.0	0.0
	DEBELJAK	111.22	33.4	52.5	14.1	0.0	0.0
	POMLAJENEC	0.46	0.0	100.0	0.0	0.0	0.0
	SKUPAJ	217.29	26.5	58.1	15.4	0.0	0.0

Površine poškodovanih sestojev zaradi  
IMISIJ IN SUŠENJA JELKE

ASOCIACIJA	Površina ha	Obseg poškodb					mrtvi s.
		do 10%	11-30%	31-50%	nad 50%		
<b>NECKERO - ABIETETUM</b>							
DROGOVNJAK 2	1.65	100.0	0.0	0.0	0.0	0.0	
DEBELJAK	29.42	3.5	96.5	0.0	0.0	0.0	
POMLAJENEC	39.78	0.0	0.0	100.0	0.0	0.0	
PREBIRALNI GOZD	119.51	50.2	49.8	0.0	0.0	0.0	
SKUPAJ	190.36	32.9	46.2	20.9	0.0	0.0	
<b>CLEMATIDO-ABIETETUM</b>							
DROGOVNJAK 2	61.32	39.4	60.6	0.0	0.0	0.0	
DEBELJAK	244.83	12.6	59.4	28.0	0.0	0.0	
POMLAJENEC	873.98	0.6	15.7	47.1	36.6	0.0	
SKUPAJ	1,180.13	5.1	27.1	40.7	27.1	0.0	
<b>LYCOPODIO - ABIETETUM</b>							
DEBELJAK	4.98	100.0	0.0	0.0	0.0	0.0	
POMLAJENEC	42.84	91.4	8.6	0.0	0.0	0.0	
SKUPAJ	47.82	92.3	7.7	0.0	0.0	0.0	
<b>LUZULO - ABIETETUM</b>							
MLADOVJE	3.82	100.0	0.0	0.0	0.0	0.0	
DROGOVNJAK 1	148.85	82.4	8.5	9.1	0.0	0.0	
DROGOVNJAK 2	19.57	100.0	0.0	0.0	0.0	0.0	
DEBELJAK	411.78	61.4	34.4	3.5	0.7	0.0	
POMLAJENEC	39.73	67.5	16.0	16.5	0.0	0.0	
SKUPAJ	623.75	68.2	25.8	5.5	0.5	0.0	
<b>DRYOPTERIDO - ABIETETUM</b>							
MLADOVJE	103.77	67.6	22.8	7.5	0.9	1.2	
DROGOVNJAK 1	1,473.19	69.7	16.4	9.6	2.3	2.1	
DROGOVNJAK 2	2,126.44	54.9	36.7	7.0	0.8	0.6	
DEBELJAK	5,266.36	37.7	32.4	24.7	5.2	0.1	
POMLAJENEC	1,452.02	35.0	27.1	31.7	6.1	0.0	
PREBIRALNI GOZD	0.52	100.0	0.0	0.0	0.0	0.0	
SKUPAJ	10,422.30	45.6	30.2	19.8	4.0	0.5	

Površine poškodovanih sestojev zaradi

IMISIJ IN SUŠENJA JELKE

ASOCIACIJA	Površina ha	Obseg poškodb					mrtvi s.
		do 10%	11-30%	31-50%	nad 50%		
-----							
BAZZANIO- ABIETETUM							
MLADOVJE	59.17	68.5	17.9	6.7	4.1	2.7	
DROGOVNJAK 1	376.37	87.0	10.4	0.9	0.5	1.2	
DROGOVNJAK 2	686.58	63.7	29.1	4.4	0.9	1.9	
DEBELJAK	933.62	53.7	30.4	13.9	1.3	0.7	
POMLAJENEC	272.85	41.9	41.6	15.3	1.2	0.0	
-----							
SKUPAJ	2,328.59	61.0	27.8	9.0	1.1	1.1	
-----							
CARICI ALBAE-PICEETUM							
PREBIRALNI GOZD	0.50	0.0	100.0	0.0	0.0	0.0	
-----							
SKUPAJ	0.50	0.0	100.0	0.0	0.0	0.0	
-----							
ADENOSTYLO GLABRAE-PIC.							
DEBELJAK	87.58	100.0	0.0	0.0	0.0	0.0	
POMLAJENEC	15.59	100.0	0.0	0.0	0.0	0.0	
-----							
SKUPAJ	103.17	100.0	0.0	0.0	0.0	0.0	
-----							
LUZULO ALBIDAE-PICEETUM							
POMLAJENEC	38.82	100.0	0.0	0.0	0.0	0.0	
-----							
SKUPAJ	38.82	100.0	0.0	0.0	0.0	0.0	
-----							
PICEETUM SUBALPINUM DINARICUM							
DEBELJAK	5.01	100.0	0.0	0.0	0.0	0.0	
-----							
SKUPAJ	5.01	100.0	0.0	0.0	0.0	0.0	
-----							
BAZZANIO- PICEETUM							
DROGOVNJAK 1	9.75	0.0	100.0	0.0	0.0	0.0	
DROGOVNJAK 2	21.62	55.6	44.4	0.0	0.0	0.0	
DEBELJAK	68.02	4.9	95.1	0.0	0.0	0.0	
-----							
SKUPAJ	99.39	15.4	84.6	0.0	0.0	0.0	
-----							
HOMOGYNO- PICEETUM							
DROGOVNJAK 1	8.46	72.9	27.1	0.0	0.0	0.0	
DROGOVNJAK 2	12.35	0.0	100.0	0.0	0.0	0.0	
DEBELJAK	53.35	36.4	63.6	0.0	0.0	0.0	
-----							
SKUPAJ	74.16	34.5	65.5	0.0	0.0	0.0	

Površine poškodovanih sestojev zaradi  
IMISIJ IN SUŠENJA JELKE

ASOCIACIJA	Površina ha	Obseg poškodb					mrtvi s.
		do 10%	11-30%	31-50%	nad 50%		
LUZULO SYLVATICAE-PICEETUM							
DROGOVNJAK 1	5.34	100.0	0.0	0.0	0.0	0.0	
DEBELJAK	31.23	100.0	0.0	0.0	0.0	0.0	
POMLAJENEC	9.39	100.0	0.0	0.0	0.0	0.0	
SKUPAJ	45.96	100.0	0.0	0.0	0.0	0.0	
GENISTO - PINETUM							
MLADOVJE	1.77	93.2	0.0	6.8	0.0	0.0	
DROGOVNJAK 1	16.57	99.4	0.0	0.6	0.0	0.0	
DROGOVNJAK 2	16.27	18.0	0.0	1.8	80.2	0.0	
DEBELJAK	20.54	98.3	0.0	1.7	0.0	0.0	
POMLAJENEC	2.16	98.1	0.0	1.9	0.0	0.0	
SKUPAJ	57.31	75.7	0.0	1.6	22.8	0.0	
PINETUM SUBILLYRICUM							
MLADOVJE	108.96	37.8	4.8	49.1	0.0	8.4	
DROGOVNJAK 1	40.83	34.5	3.5	40.0	0.8	21.3	
DROGOVNJAK 2	148.99	27.7	21.7	35.1	0.7	14.8	
DEBELJAK	519.46	48.0	18.3	19.7	13.6	0.4	
POMLAJENEC	16.22	0.0	79.9	0.0	20.1	0.0	
PREBIRALNI GOZD	5.69	0.0	100.0	0.0	0.0	0.0	
SKUPAJ	840.15	41.2	18.2	26.7	8.9	5.0	
VACCINIO-VITIS IDEAE-PINETUM							
MLADOVJE	38.76	0.0	47.1	22.5	0.0	30.4	
DROGOVNJAK 1	151.30	32.1	21.0	23.5	23.5	0.0	
DROGOVNJAK 2	134.56	60.3	12.6	20.9	4.4	1.9	
DEBELJAK	80.52	63.7	24.0	11.6	0.6	0.0	
POMLAJENEC	25.27	98.9	1.1	0.0	0.0	0.0	
PREBIRALNI GOZD	1.90	100.0	0.0	0.0	0.0	0.0	
SKUPAJ	432.31	48.1	20.0	18.9	9.7	3.3	
MYRTILLO-PINETUM							
MLADOVJE	18.85	21.7	9.7	19.5	49.2	0.0	
DROGOVNJAK 1	1.87	0.0	100.0	0.0	0.0	0.0	
DROGOVNJAK 2	353.23	47.7	25.7	18.9	6.5	1.1	
DEBELJAK	270.04	45.4	25.6	15.6	7.9	5.4	
POMLAJENEC	36.77	29.2	8.6	10.9	47.9	3.4	
SKUPAJ	680.76	44.9	24.5	17.1	10.5	2.9	

Površine poškodovanih sestojev zaradi  
IMISIJ IN SUŠENJA JELKE

ASOCIACIJA	Površina		Obseg poškodb			
	ha	do 10%	11-30%	31-50%	nad 50%	mrtvi s.
-----						
ULMO - ACERETUM						
DROGOVNJAK 1	1.58	100.0	0.0	0.0	0.0	0.0
DEBELJAK	1.30	100.0	0.0	0.0	0.0	0.0
POMLAJENEC	1.52	0.0	100.0	0.0	0.0	0.0
-----						
SKUPAJ	4.40	65.5	34.5	0.0	0.0	0.0
ACERI - FRAXINETUM						
MLADOVJE	7.24	93.1	0.1	6.8	0.0	0.0
DROGOVNJAK 1	6.78	100.0	0.0	0.0	0.0	0.0
DROGOVNJAK 2	13.98	98.2	0.0	1.8	0.0	0.0
DEBELJAK	29.69	80.5	6.5	13.0	0.0	0.0
POMLAJENEC	1.64	75.0	6.7	18.3	0.0	0.0
-----						
SKUPAJ	59.33	88.3	3.4	8.3	0.0	0.0
QUERCO - OSTRYETUM						
DROGOVNJAK 1	22.07	44.9	51.6	3.6	0.0	0.0
DROGOVNJAK 2	65.32	100.0	0.0	0.0	0.0	0.0
POMLAJENEC	7.19	0.0	0.0	100.0	0.0	0.0
-----						
SKUPAJ	94.58	79.5	12.0	8.4	0.0	0.0
OSTRYO - FRAXINETUM ORNII						
DEBELJAK	9.32	100.0	0.0	0.0	0.0	0.0
POMLAJENEC	3.51	0.0	0.0	0.0	100.0	0.0
-----						
SKUPAJ	12.83	72.6	0.0	0.0	27.4	0.0
SESLERIO - OSTRYETUM						
MLADOVJE	15.01	100.0	0.0	0.0	0.0	0.0
DROGOVNJAK 1	59.22	100.0	0.0	0.0	0.0	0.0
DROGOVNJAK 2	43.34	71.1	28.9	0.0	0.0	0.0
DEBELJAK	9.52	39.3	60.7	0.0	0.0	0.0
POMLAJENEC	3.94	0.0	0.0	0.0	100.0	0.0
-----						
SKUPAJ	131.03	83.0	14.0	0.0	3.0	0.0
PINETUM MUGHI						
DEBELJAK	5.04	100.0	0.0	0.0	0.0	0.0
POMLAJENEC	2.10	100.0	0.0	0.0	0.0	0.0
-----						
SKUPAJ	7.14	100.0	0.0	0.0	0.0	0.0



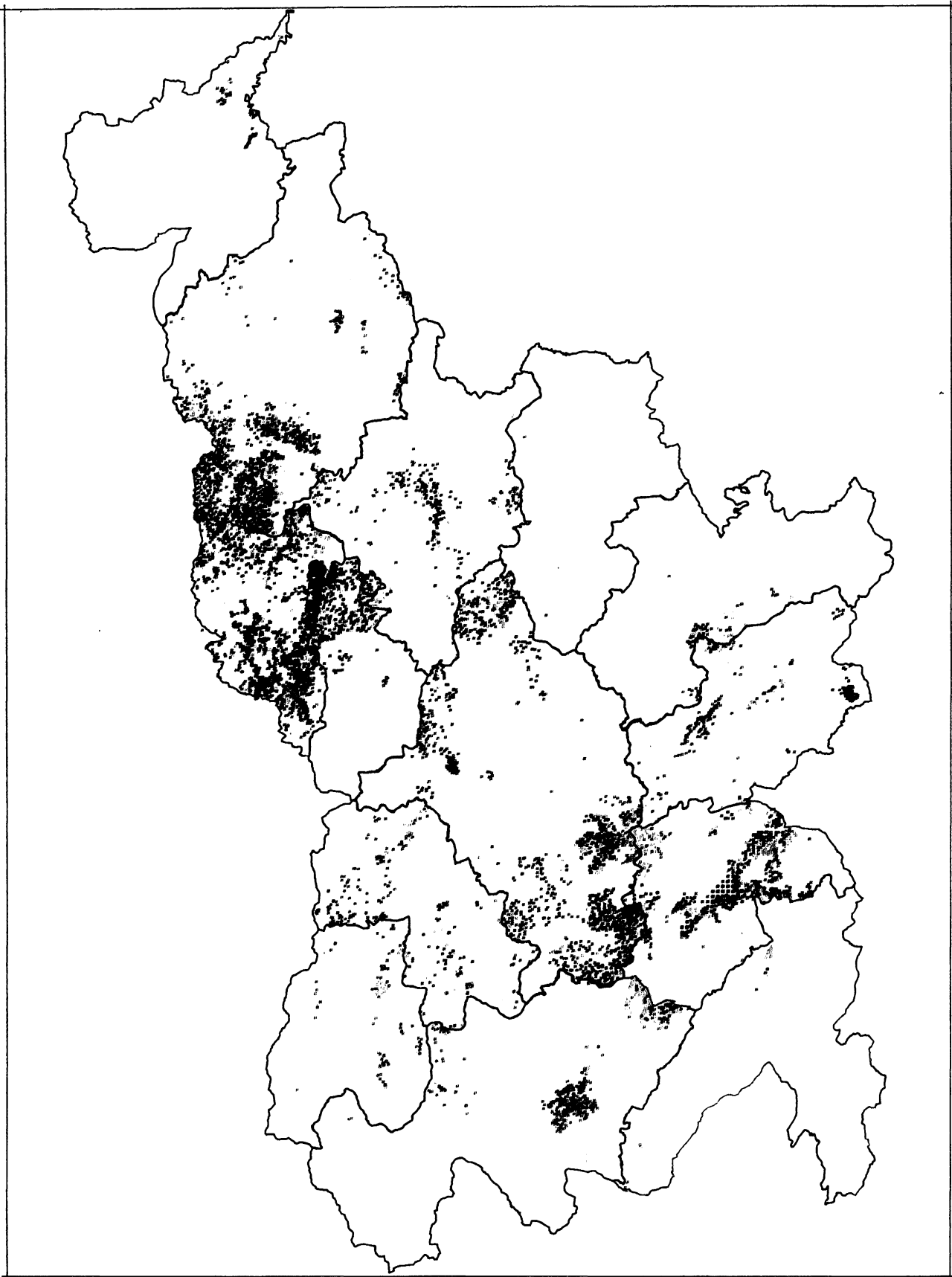
Površine poškodovanih sestojev zaradi  
IMISIJ IN SUŠENJA JELKE

ASOCIACIJA	Površina ha	Obseg poškodb				mrtvi s.
		do 10%	11-30%	31-50%	nad 50%	
S K U P A J						
MLADOVJE	1,660.43	66.3	19.7	9.4	1.6	2.9
DROGOVNJAK 1	9,421.74	67.9	21.6	8.5	1.3	0.7
DROGOVNJAK 2	21,829.72	64.8	27.0	6.3	1.4	0.6
DEBELJAK	37,261.80	51.9	31.9	13.1	2.8	0.3
POMLAJENEC	13,315.48	32.4	35.1	25.9	6.1	0.6
PREBIRALNI GOZD	2,662.91	42.7	47.2	10.1	0.0	0.0
OPUŠČENI PANJEVEC	279.07	18.3	81.7	0.0	0.0	0.0
LISTNIK, STELJNIK	168.35	47.4	40.0	12.6	0.0	0.0
GRMIŠČE	362.31	93.3	6.7	0.0	0.0	0.0
SKUPAJ	86,961.81	53.9	30.3	12.6	2.7	0.5

IMISIJA+JEL

0 4

Meters



LEGEND

. do 10%  
: 11 - 30%  
: 31 - 50%  
: nad  
: mrtvi ses